



National
Museums
Scotland



Discovering dinosaurs!



Roarr!

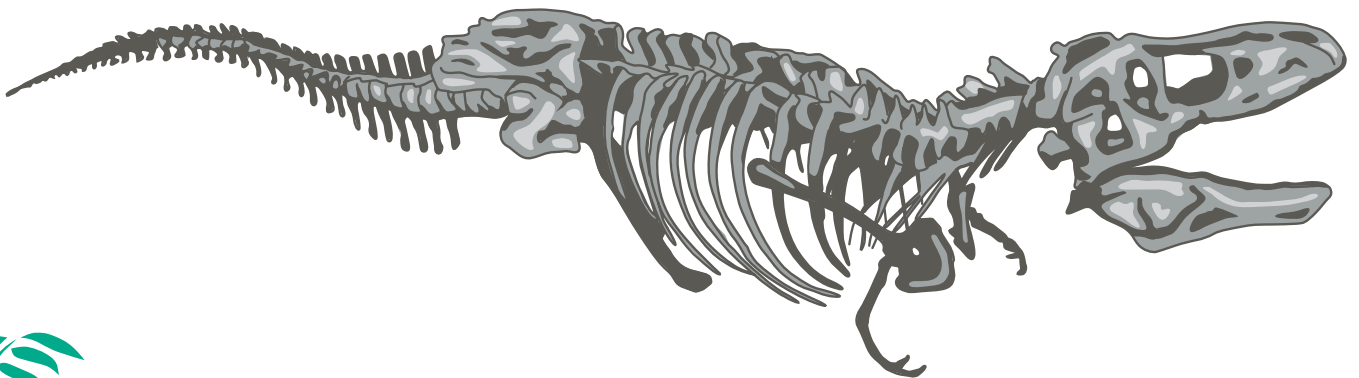
I'm Wee rex. Follow my trail around the Museum to discover some fascinating Dino facts.

Start in LEVEL 1 Animal World gallery

Tip toe up to Tyrannosaurus rex

Draw in *T.rex*'s missing legs and teeth

T.rex's teeth were super strong, for crunching bone and slicing through muscle.



Look closely at the big bone at *T.rex*'s feet. Can you spot the teeth marks?



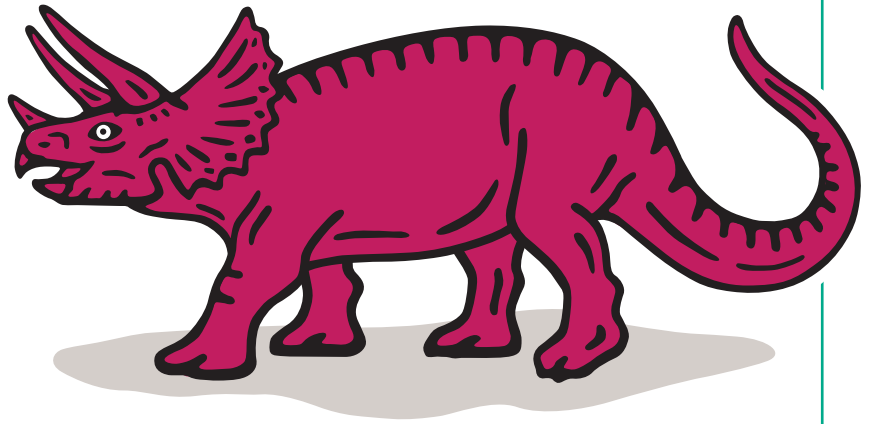
Track down *Triceratops*

What did *Triceratops* use its horns for?

Choose one answer

- ☐ For digging burrows?
- ☐ For fighting and defence?
- ☐ To open tins of dinosaur food?

Clue: a *Triceratops* fossil found in 1997 looked as though its horn had been bitten off by a *T.rex*.



Head upstairs to LEVEL 3 Animal Senses gallery

Pick out *Parasaurolophus*



Join the dots to complete the shape of this dinosaur's head

The bony crest is hollow. Some scientists think the animal might have used it to make a noise like a musical horn.

Investigate the *Ichthyosaur*
(Seeing in the dark case, object 6)

Fill in the missing letters

Ichthyosaurs had very large

___ Y ___

This animal lived in the sea and looked a bit like a dolphin.



Move up to LEVEL 5 Survival gallery

Spot *Struthiomimus*

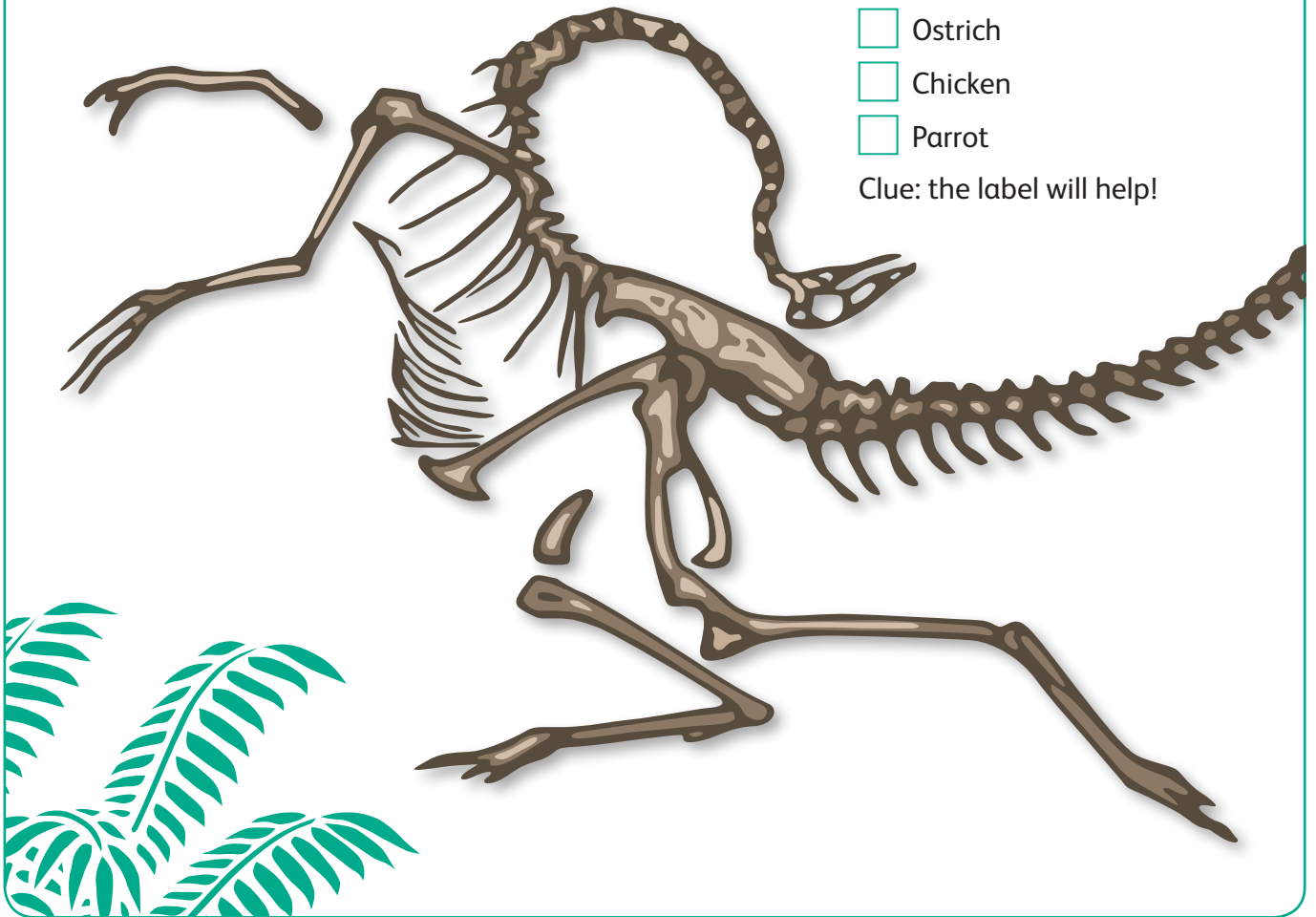


Can you spot this dinosaur's head, legs and tail?

Which bird does *Struthiomimus* look most like?

- ☐ Ostrich
- ☐ Chicken
- ☐ Parrot

Clue: the label will help!



Examine the *dinosaur egg*

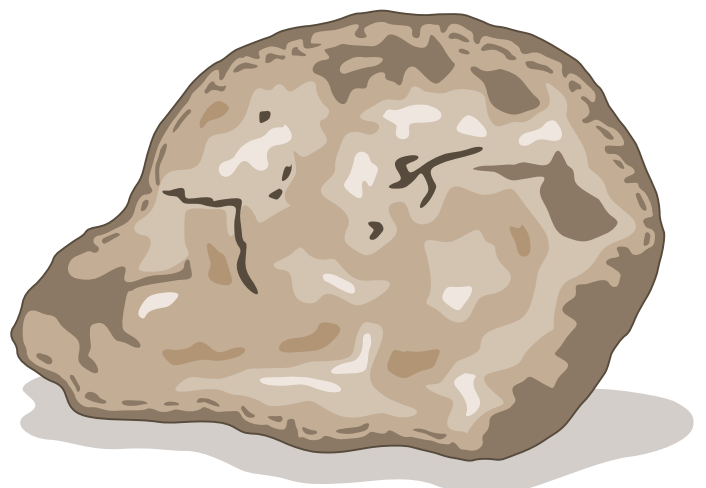
(Big Leaps case, object 7)

Which words would you use to describe this egg?

- ☐ Stony?
- ☐ Bumpy?
- ☐ Smooth?



All dinosaurs hatched from eggs. You couldn't crack this egg, because it has fossilised into stone.

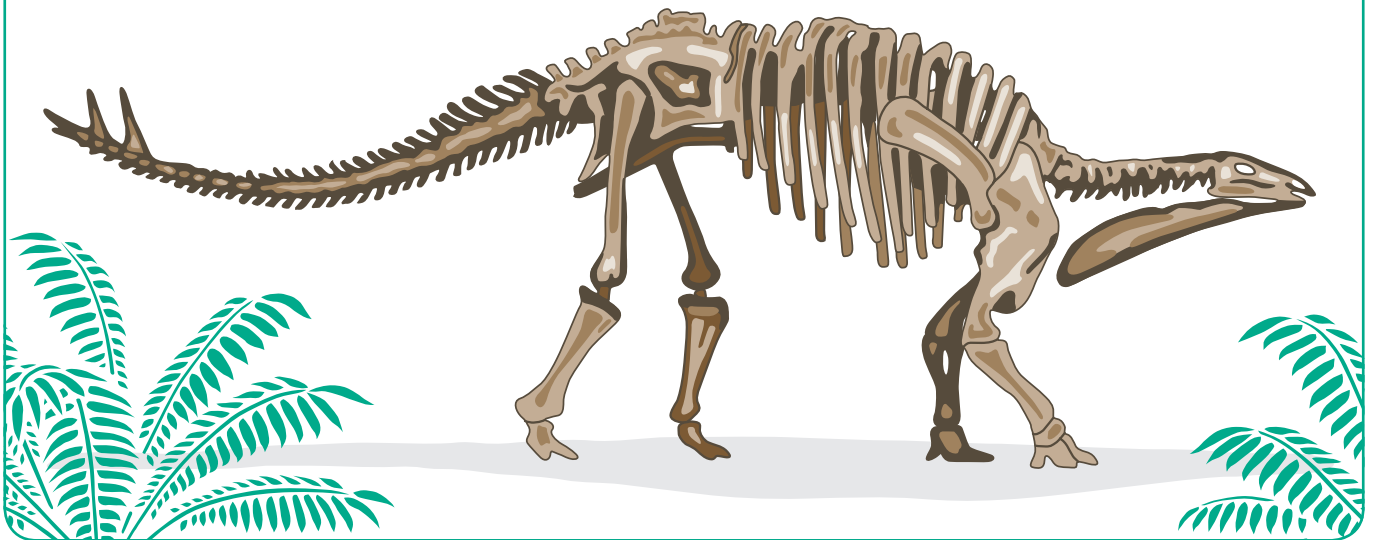


Adventure Planet gallery

Stop by *Stegosaurus*



Draw in the missing plates on the *Stegosaurus*' back



The bony plates might have flushed red as though the *Stegosaurus* was blushing! This could have been to attract a mate or to frighten away predators.

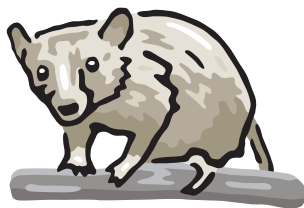
Well done! You've completed the dino trail! You are as mighty as a *T.rex* and as quick as a *Struthiomimus*. Do your best dinosaur roarrrr.... to celebrate!



As you look around the Museum, see if you can spot some of the other animals that lived at the same time as dinosaurs

Survival gallery Level 5

- ☐ **Morganucodon**
(one of the earliest mammals)



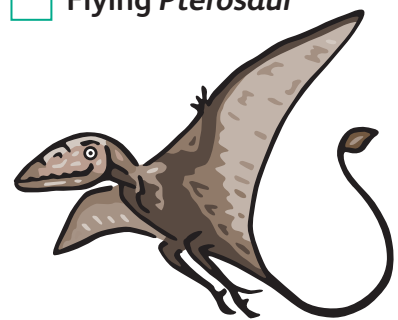
Survival gallery Level 5

- ☐ **Ammonite fossil**
Look out for more ammonite fossils in the Grand Gallery marble floors!



Animal World gallery Level 1

- ☐ **Flying Pterosaur**



Look out for Wee rex and family in the Museum shop

