



# Primary School and Nursery Programme 2026–27

*“It’s brilliant! Great  
for a wide range of  
abilities and needs.”*

P6 teacher, Stirling

Explore our  
schools offer



*Bookings  
open 10 Aug*

# Ignite curiosity. Build critical thinkers. Inspire young minds. Supercharge your teaching and learning with our extraordinary collections.

From **Scottish history, science and technology** and the **natural world** to **sustainability, art and design**, and **world cultures** – our four national museums and online sessions bring big ideas to life for learners across Scotland. Our sessions are teacher-tested, delivered by our expert Learning team, and align with the Curriculum for Excellence, the UN Sustainable Development Goals, and the Meta-skills framework.

■	<b>National Museum of Scotland</b> Edinburgh	<b>3</b>
■	<b>National War Museum</b> Edinburgh	<b>6</b>
■	<b>National Museum of Flight</b> East Lothian	<b>7</b>
■	<b>National Museum of Rural Life</b> East Kilbride	<b>8</b>
■	<b>Digital Schools Sessions</b> Online	<b>10</b>



## Additional Support for Learning

We are committed to making our programme inclusive for everyone. A number of our sessions can be adapted to support ASN learners (noted throughout the programme). Where possible we are always happy to adapt our approach to meet the needs of your learners. If you have questions about whether a workshop is right for your class, please get in touch via the contact information on each venue page.

We also offer a range of additional accessibility resources, including sensory backpacks, visual stories, workshop breakdowns, a Changing Places toilet\*, a sensory map, and communication cards. For information visit [nms.ac.uk/Schools](https://nms.ac.uk/Schools)

*\*National Museum of Scotland only*

# National Museum of Scotland

Chambers Street  
Edinburgh EH1 1JF  
0131 247 4041  
schools@nms.ac.uk

Discover the history of Scotland, the wonders of nature and diverse cultures, scientific breakthroughs and exquisite art, design and fashion all under one roof.

**Workshops** run throughout the year, repeating every term on **Tuesday, Wednesday, and Thursday at 10:15 & 11:45**. Booking gives priority access to the cloakroom and lunch space. Please visit our website for full details, workshop dates and to request your visit.

## Workshop & tour prices

**£110** UK schools

**Free:** 20% of our sessions are available free of charge to schools in SIMD 1 & 2 areas (where at least 60% of pupils are also classified as SIMD 1 & 2) and all special/ASL schools (Scotland only). Offer is subject to availability.

**Exhibitions:** £4 per pupil, adults free (1 adult to 10 pupils)

## 20% off Autumn trips

Visit the National Museum of Scotland before 31 December 2026 and get 20% off\* your workshop or tour.

\*Offer excludes *Roman Scotland Explorer* workshop and exhibition tickets to *Giants* and *Roman Scotland: Life on the Edge of Empire*. Workshops and tours must take place on dates between 1/9/26–31/12/26.

## Early Years

### Wee Explorers

Early level (Nursery–P1), 45 mins  
Step into the story of *Max and Zap at the Museum* in this lively early years session. With real objects, costumes, rhymes and actions, pupils build language and confidence as young museum explorers.

Maximum capacity 25 children

For dates visit [nms.ac.uk/WeeExplorers](https://nms.ac.uk/WeeExplorers)



© Andy Catlin

## STEM

### Mini Engineers

Early & first level (Nursery–P2), 60 mins  
The museum lighthouse has broken, can your class fix it? Pupils investigate, design and test solutions through playful engineering activities that introduce core STEM ideas.

Maximum capacity 25 children

*Adaptable version available*

For dates visit [nms.ac.uk/MiniEngineers](https://nms.ac.uk/MiniEngineers)

### A Dinosaur Adventure **UPDATED**

Early & first level (P1–P3), 60 mins  
Go on a dinosaur hunt! Using movement, role-play and object handling, pupils uncover what dinosaurs were like and how we learn about them.

*Adaptable version available*

For dates visit [nms.ac.uk/DinoAdventure](https://nms.ac.uk/DinoAdventure)

## Museum on the Move

First & second level (P3–P4 & P5–P7), 60 mins

In this fast-paced workshop, pupils tackle a real-life maths challenge to help us plan to move our famous Bulldog aircraft. Working together they solve a series of maths-related problems then finish with a fun coding task.

For dates visit [nms.ac.uk/ScotlandOnTheMove](https://nms.ac.uk/ScotlandOnTheMove)

## Unlock the Museum

**NEW**

Second level (P5–P7), 75 mins

Your pupils will become code-cracking, clue-hunting explorers in this fast-paced, escape room-style adventure. Teams work together to solve puzzles inspired by real museum objects, guided by our expert Learning team. Perfect for team building or as an end of term treat.

For dates visit [nms.ac.uk/UnlockTheMuseum](https://nms.ac.uk/UnlockTheMuseum)



## Animal Adaptations

Second level (P5–P7), 60 mins

Why do animals look and behave the way they do? Pupils explore real specimens, test ideas in a bird beak investigation and discover how species have adapted to survive.

*Adaptable version available*

For dates visit [nms.ac.uk/AnimalAdaptations](https://nms.ac.uk/AnimalAdaptations)

## Energy Explorer Scotland

**UPDATED**

Second level (P5–P7), 75 mins

Pupils explore the *Energise* gallery to discover how energy is used and produced in Scotland, then investigate energy production using wind turbines.

For dates visit [nms.ac.uk/EnergyExplorer](https://nms.ac.uk/EnergyExplorer)

## Social Studies

### An Egyptian Adventure

**UPDATED**

Early & first level (P1–P2), 60 mins

Travel to ancient Egypt through story, movement and drama. Pupils will explore objects from the marketplace, temple and River Nile to discover more about the lives of everyday people in the past.

*Adaptable version available*

For dates visit [nms.ac.uk/EgyptianAdventure](https://nms.ac.uk/EgyptianAdventure)

### Egypt Explorer

First & second level (P3–P5), 75 mins

How and why were Egyptian objects brought to the museum here in Scotland? Visit our *Ancient Egypt Rediscovered* gallery, get hands on with incredible objects and look beyond pharaohs and pyramids to learn more about the history of ancient Egypt.

*Please note there are mummified human remains on display in the gallery.*

For dates visit [nms.ac.uk/EgyptExplorer](https://nms.ac.uk/EgyptExplorer)

### Roman Scotland Explorer

**NEW**

First & second level (P3–P5), 90 mins

Visit our *Roman Scotland* exhibition then investigate objects that reveal what life was like for the different communities at the edge of Empire. Session includes a guided highlights tour of *Roman Scotland: Life on the Edge of Empire*.

For dates visit [nms.ac.uk/RomanExplorer](https://nms.ac.uk/RomanExplorer)

### Viking Explorer

First & second level (P3–P5), 75 mins

Become archaeologists on a tour of our *Early People* gallery. Explore the lives of everyday people and investigate evidence from a real Viking burial.

*Please note pupils will look at a real skeleton and Viking graves during this workshop.*

For dates visit [nms.ac.uk/VikingExplorer](https://nms.ac.uk/VikingExplorer)

# Sustainability

## Eco Explorer Scotland

**NEW**

First & second level (P4–P7), 75 mins  
Pupils explore the past, present and future of Scotland's biodiversity. Through gallery exploration, discussion and hands-on investigation of our invertebrate collection, pupils will consider the threats facing different species and share practical actions for change.

*Adaptable version available*

For dates visit [nms.ac.uk/EcoExplorer](https://nms.ac.uk/EcoExplorer)

## Giants Explorer

**NEW**

First & second level (P4–P6), 75 mins  
Why do giant animals exist and why did some become extinct? In this active, hands-on workshop, pupils investigate massive prehistoric invertebrates and work together to build their own mini-beast models. They come face-to-face with giant animals from the past and present on a gallery tour and consider how we can respond to today's climate challenges.

For dates visit [nms.ac.uk/GiantsExplorer](https://nms.ac.uk/GiantsExplorer)

# Study Day

## Museum Stories

First & second level (P4–P7), 45 min show, 30 min handling session & 30 min gallery or exhibition visit

Find out how museums work. Pupils will meet curators, ask them questions and take part in an interactive show. They will also handle real and replica artefacts and explore galleries with our Learning team.

£5 per pupil

## Museum Stories: Roman Scotland

**NEW**

Session includes a guided highlights tour of our exhibition *Roman Scotland: Life on the Edge of Empire*.

For dates visit [nms.ac.uk/MuseumStoriesRoman](https://nms.ac.uk/MuseumStoriesRoman)

## Museum Stories: Ancient Egypt

For dates visit [nms.ac.uk/MuseumStoriesEgypt](https://nms.ac.uk/MuseumStoriesEgypt)

## Museum Stories: Vikings in Scotland

For dates visit [nms.ac.uk/MuseumStoriesVikings](https://nms.ac.uk/MuseumStoriesVikings)



# Tours

Let our Learning team lead your class through the galleries. Tours are a great way to get your bearings on a first visit or delve deeper into a topic on a return visit.

## Museum Explorer Tour

First level to senior phase, 60 mins

This highlights tour showcases key objects and stories across the museum. Perfect for first time visits.

For dates visit [nms.ac.uk/MuseumExplorer](https://nms.ac.uk/MuseumExplorer)

## Scotland Explorer Tour

First & second level (P4–P5), 60 mins

This tour digs into the myths and realities behind some of Scotland's iconic historical figures, including Bonnie Prince Charlie, Mary, Queen of Scots and King James VI and I.

For dates visit [nms.ac.uk/ScotlandExplorer](https://nms.ac.uk/ScotlandExplorer)

## Self-led tour

**FREE**

Explore your choice of topic at your own pace with a free visit. Download resources and trails to support your trip, where available.

Please note access to the cloakroom and lunch space is subject to availability. We recommend visiting on Mondays or Fridays when the museum is less busy.  
[nms.ac.uk/ScotlandSelfLed](https://nms.ac.uk/ScotlandSelfLed)

# Exhibition

## Roman Scotland: Life on the Edge of Empire

National Museum of Scotland

14 Nov 2026–18 Apr 2027

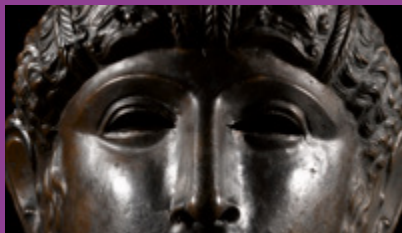
Reconsider Scotland's relationship with the Roman world. Pupils will discover objects and stories from a diverse frontier community, including finds from a 2nd century AD Roman fort at Musselburgh in East Lothian. The exhibition explores how local groups responded to Roman presence, from conflict to cooperation, and the impact of these encounters.

Schools exhibition slots available Mon & Fri, 10:00–12:00.

**£4 per pupil**, booking required

Adults free (1 adult to 10 pupils)

[nms.ac.uk/RomanSchools](https://nms.ac.uk/RomanSchools)



Enhance your visit with our new sessions inspired by the exhibition:

- Roman Scotland Explorer\*
- Museum Stories: Roman Scotland\*
- Digital Schools Session: The Romans: Meet the Gods

\*Includes guaranteed entry to the exhibition with an expert guide

# National War Museum

Edinburgh Castle  
EH1 2NG  
0131 247 4041  
[schoolsnwm@nms.ac.uk](mailto:schoolsnwm@nms.ac.uk)

Learn about Scotland's experiences of war within the walls of Edinburgh Castle. Here pupils will encounter powerful stories of conflict, service and remembrance.

Workshops run on set **Mondays** at **10:15 & 11:45** and include free entry to Edinburgh Castle. Please visit our website for full details, workshop dates, and to request your visit.

## Workshop prices

**£110** UK schools

**Free:** 20% of our sessions are available free of charge to schools in SIMD 1 & 2 areas (where at least 60% of pupils are also classified as SIMD 1 & 2) and all special/ASL schools (Scotland only). Offer is subject to availability.

# Social Studies

## Second World War Explorer

Second level (P5–P7), 75 mins

Using real objects and personal stories, pupils will investigate the lives of people who lived through the Second World War, including an evacuee and a prisoner of war. The workshop includes guided exploration of the museum galleries.

*Please note the Wartime Life Room is on the third floor with no lift access.*

*An accessible version is available on request.*

For dates visit [nms.ac.uk/WorldWarExplorer](https://nms.ac.uk/WorldWarExplorer)



© Ruth Armstrong Photography

# National Museum of Flight

East Fortune Airfield  
East Lothian EH39 5LF  
0131 247 4238  
[schoolsnmof@nms.ac.uk](mailto:schoolsnmof@nms.ac.uk)

Explore the history of aviation from the First World War to the present day at this former Second World War airfield. Here pupils can get close to real aircraft and explore themes including flying forces, design and conflict.

Workshops run on set **Wednesdays & Thursdays** throughout the year at **10:15 & 11:45**. Booking includes access to a cloakroom and lunch space, plus support from staff or volunteers for your whole visit. Please visit our website for full details, workshop dates, and to request your visit.

## Workshop prices

**£110** UK schools

**Free:** 20% of our sessions are available free of charge to schools in SIMD 1 & 2 areas (where at least 60% of pupils are also classified as SIMD 1 & 2) and all special/ASL schools (Scotland only). Offer is subject to availability.

## Early Years

### Transport

Early level (P1–P2), 60 mins

Learn about things that fly and the people who fly them through movement, song, dressing up and simple activities.

For dates visit [nms.ac.uk/Transport](https://nms.ac.uk/Transport)

## STEM

### Museum on the Move

First & second level (P3–P4 & P5–P7), 60 mins

Your mission: figure out how to move Concorde into a new hangar. Pupils work together to tackle real world maths challenges, then finish with a removal truck coding task that puts their problem solving skills to the test.

For dates visit [nms.ac.uk/FlightOnTheMove](https://nms.ac.uk/FlightOnTheMove)

### Fantastic Flying Forces

Second level (P5–P7), 60 mins

What makes aeroplanes fly? Pupils experiment with lift, drag, thrust and weight, then continue exploring in our interactive gallery, *Fantastic Flight*.

For dates visit [nms.ac.uk/FlyingForces](https://nms.ac.uk/FlyingForces)



## Social Studies

### Second World War Scotland

Second level (P5–P7), 60 mins

What was it like at RAF East Fortune in wartime? Pupils will investigate real Second World War objects and plan their escape from occupied France.

For dates visit [nms.ac.uk/SecondWorldWarScotland](https://nms.ac.uk/SecondWorldWarScotland)

## Free visits

A visit to the museum can be used to explore a wide range of topics. Free self-led visits can be booked during term time from April to October. A self-led visit provides you with:

- Free entry to the museum
- Access to a play area, cloakroom and lunch space, subject to availability
- Free coach parking
- Links to a range of downloadable resources

For more information visit [nms.ac.uk/FlightSelfLed](https://nms.ac.uk/FlightSelfLed)

# National Museum of Rural Life

Wester Kittochside  
East Kilbride G76 9HR  
0131 247 4377  
schoolsnmorl@nms.ac.uk

Experience life in the countryside and meet the animals on our historic working farm. Explore our museum galleries and farmhouse to investigate food, farming and sustainability.

Workshops run on set dates throughout the year, repeating every term on **Tuesday, Wednesday & Thursday at 10:30 & 11:45**. Bookings include a farm visit and access to the cloakroom and lunch space. Please visit our website for full details, workshop dates, and to request your visit.

## Workshop prices

**£110** UK schools

**Free:** 20% of our sessions are available free of charge to schools in SIMD 1 & 2 areas (where at least 60% of pupils are also classified as SIMD 1 & 2) and all special/ASL schools (Scotland only). Offer is subject to availability.

## Sustainability

### Farm! Food! Fun!

**NEW**

Early level (Nursery & P1), 60 mins  
Bring food and farming to life in this fun-filled adventure. Through games, dress up and sing along, young learners will plant seeds and discover more about the food on their plate.

Maximum capacity 25 children

For dates visit [nms.ac.uk/FarmFoodFun](https://nms.ac.uk/FarmFoodFun)

### Butter Making

Early, first & second level (P1–P4 & P5–P7), 60 mins

In this fun, hands-on workshop pupils discover where milk comes from and learn how cream is transformed into butter. Pupils will learn about traditional milkmaid methods, then churn and taste their own butter.

*Adaptable version available.*

For dates visit [nms.ac.uk/Butter](https://nms.ac.uk/Butter)



© Andy Catlin

### Ice Cream Making

Early, first & second level (P1–P4 & P5–P7), 60 mins

Discover the simple science behind ice cream making in this delicious workshop. Using local ingredients pupils work in groups to shake and make ice cream before tasting their creations.

For dates visit [nms.ac.uk/IceCream](https://nms.ac.uk/IceCream)



© Ruth Armstrong  
Photography



© Andy Catlin

## Farm to Fork

First & second level (P2–P4 & P5–P7), 60 mins  
 What's in our food and how does it get to our plates? Through team games and challenges, pupils explore the journey from farm to fork. They will investigate food miles and find out why choosing local produce can have a positive impact on the planet. All activities are tailored to the appropriate level.

For dates visit [nms.ac.uk/FarmToFork](https://nms.ac.uk/FarmToFork)

## Social Studies

### Second World War: Evacuees

Second level (P5–P7), 75 mins  
 It's 1939 and your class has just been evacuated to Wester Kitchside Farm. Experience life as an evacuee in the countryside during the Second World War in this immersive session led by a costumed interpreter.

For dates visit [nms.ac.uk/Evacuees](https://nms.ac.uk/Evacuees)

## STEM

### Museum on the Moo-ve

First & second level (P4–P7), 60 mins  
 How do you safely move a prize-winning cow? In this real-world maths challenge pupils work in teams and create a plan to move Nora, our award-winning Ayrshire cow, to the local farm show.

For dates visit [nms.ac.uk/RuralOnTheMove](https://nms.ac.uk/RuralOnTheMove)

Don't forget to visit our brand new gallery *Scotland's Farming Future* where you can meet Morag the sheep – an early example of cloned animals.



## Free visits

A visit to the museum can be used to explore a wide range of topics. Booking a self-led visit provides you with:

- Free entry to the museum and working farm
- Access to a cloakroom, lunch space and play area
- Free parking
- Links to a range of resources you can download for free

For more information visit [nms.ac.uk/RuralSelfLed](https://nms.ac.uk/RuralSelfLed)

# Digital Schools Sessions

# FREE

Bring the museum into your classroom with our popular, live and interactive digital sessions. These engaging 25 minute sessions are led by our expert Learning team via Microsoft Teams. Available Fridays during term time at 11:30. Free, booking required  
[nms.ac.uk/DigitalSchools](https://nms.ac.uk/DigitalSchools)

## STEM

### Dinosaurs!

First level (P2–P4)

Discover how palaeontologists uncover the ancient secrets of the dinosaurs in our most popular online session. See our incredible fossil collections, meet our *T. rex*, and use problem solving to uncover our mystery dinosaur.

[nms.ac.uk/DigitalDinos](https://nms.ac.uk/DigitalDinos)

### Made in Scotland

NEW

First & second level (P3–P6)

Journey through some of Scotland's most iconic inventions and celebrate Dolly the sheep's 30th birthday. Using real objects from our collections, pupils will explore Scottish innovation in action. Can your class crack the clues and identify the mystery object along the way?

[nms.ac.uk/MadeInScotland](https://nms.ac.uk/MadeInScotland)

### Fantastic Flying Forces

UPDATED

Second level (P5–P7)

Explore the four forces that help aircraft fly in this live session from the National Museum of Flight. Pupils will try simple hands-on experiments and find out how flying forces shaped Concorde, the iconic supersonic aircraft on display at the museum.

[nms.ac.uk/DigitalFlyingForces](https://nms.ac.uk/DigitalFlyingForces)



*“Engaging and informative and pitched perfectly for primary-aged pupils.”*

P4 teacher, East Dunbartonshire

## Social Studies

### Ancient Egypt: Journey to the Afterlife

First level (P3–P4)

Take a digital dive into ancient Egypt. Pupils will examine authentic artefacts, and find out about mummification and ancient Egyptian beliefs about the afterlife.

[nms.ac.uk/DigitalEgypt](https://nms.ac.uk/DigitalEgypt)

### Celts in Conflict

First & second level (P3–P5)

In this lively, interactive digital session, pupils explore real museum objects to consider how they might have responded to the arrival of the Romans in Scotland 2,000 years ago.

[nms.ac.uk/CeltsInConflict](https://nms.ac.uk/CeltsInConflict)

## Meet the Vikings

First & second level (P3–P5)

What was life really like for warriors, traders, farmers, women and children in Viking-age Scotland? Through fast-paced quizzes and encounters with real and mystery objects, pupils discover what life was like in the Viking-age world.

[nms.ac.uk/MeetTheVikings](https://nms.ac.uk/MeetTheVikings)

## The Myth of Mary, Queen of Scots

First & second level (P3–P5)

Discover the myths and legends surrounding Mary, Queen of Scots in this lively session and meet the key figures who shaped her life. Pupils will examine museum artefacts as primary sources and investigate a mystery object to deepen their understanding of Mary's world.

[nms.ac.uk/MythOfMary](https://nms.ac.uk/MythOfMary)

## The Romans: Meet the Gods **NEW**

First & second level (P3–P5)

Meet the gods that the Romans turned to for help and protection when they were on the Scottish frontier. Pupils will find out who the gods were, how different people used them, and then try to match each deity to someone's story.

[nms.ac.uk/MeetTheGods](https://nms.ac.uk/MeetTheGods)

## Gaelic Stories **NEW**

First & second level (P4–P7)

Celebrate World Gaelic Week with our new digital session exploring Gaelic culture. See objects from our collection and discover the rich stories they reveal about Gaelic history, heritage and identity. Available in Gaelic and English versions.

[nms.ac.uk/GaelicStories](https://nms.ac.uk/GaelicStories)

## Second World War: Life on an RAF Station **NEW**

Second level (P5–P7)

Find out about the people who served at East Fortune Airfield during wartime in this live session from the National Museum of Flight. Pupils will explore real and replica clothing, from smart uniforms to sheepskin flying gear. Can they guess people's jobs from the clothes they wore?

[nms.ac.uk/RAFStation](https://nms.ac.uk/RAFStation)



## Sustainability

### On the Farm **NEW**

First level (P2–P4)

Find out how food, farming and animal wellbeing are all connected in this session from the National Museum of Rural Life. Packed with lively visuals, this session brings modern farming to life for curious young learners.

[nms.ac.uk/OnTheFarm](https://nms.ac.uk/OnTheFarm)

### Eco Detectives

First & second level (P4–P7)

Pupils become wildlife detectives as they investigate Scottish species and explore four different ecosystems found around our museum sites. Through an engaging on-screen experience using close-up digital microscopy, quizzes and real objects, they'll analyse clues – including a mystery poo – to work out which animal it belongs to.

[nms.ac.uk/EcoDetectives](https://nms.ac.uk/EcoDetectives)

## Free online resources

Get more from your visit with free trail sheets, short films and games you can use to support learning and teaching before, during and after your trip.

[nms.ac.uk/Resources](https://nms.ac.uk/Resources)



## Schools enews

Sign up to our regular schools enews to keep up to date with our activities throughout the year.  
[nms.ac.uk/SchoolsSignUp](https://nms.ac.uk/SchoolsSignUp)

